



sea to sky clean air society

*presents*  
**Burn It Smart  
Community Workshop**



# Workshop Outline

## Getting Prepared

- What is wood smoke
- Purchasing & preparing fuel supply
- Loading the firebox
- Proper burn technique

## Wood Heating Appliances & Chimneys

- Appliance maintenance & certification
- Chimney maintenance & height
- Q & A

# What is wood smoke?



## **Air pollution**

- Connection to air quality & health

## **Creosote potential**

- What is creosote?
- Connection to chimney fires

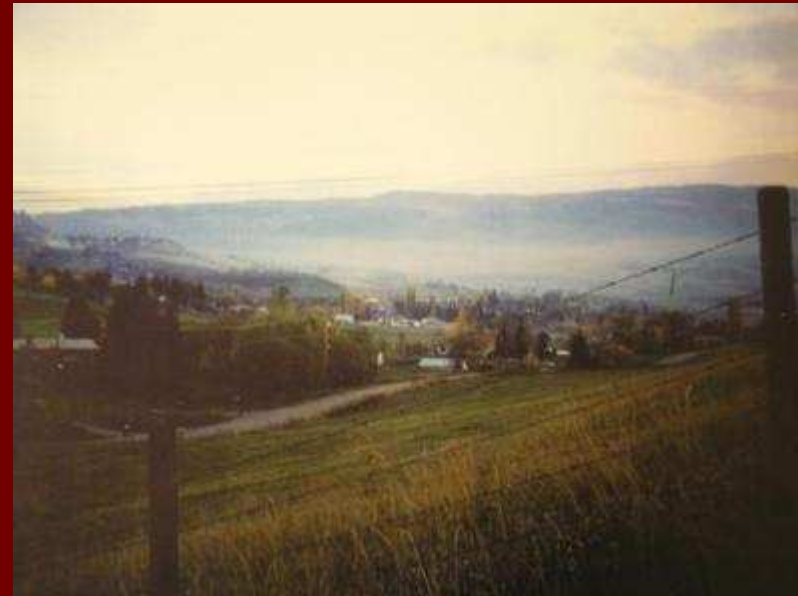
## **Wasted energy**

- Unburned fuel
- Save money!

## **Signs of improper & inefficient burning**

- Outdoor: chimney smoke
- Indoors: smell

# Smoke has no boundaries!



**Valley Communities  
and  
Temperature Inversions**

# Why Practice skilled & efficient burning?



- **Reduce air pollution**
- **Protect health**
- **Improve fire safety**
- **Save Money**

# Your Health

- Wood smoke is not a good thing
- We can do something about it



# How to reduce

- New Stove Technology
- Seasoned Firewood
- System Maintenance
- System operation



# New Stoves are better

- On average, advanced, EPA certified stoves are about one-third more efficient than the old box, pot belly, or step stoves, and almost all of the currently available central wood heating furnaces and boilers. That's one-third less cost if you buy firewood, or one-third less cutting, hauling and stacking if you cut your own. Although this higher efficiency is a by-product of mandatory emissions limits, it has made the EPA rules a winner for both the environment and stove users. Over just two seasons of wood burning the greater efficiency of the stove will more than compensate for the higher initial cost.

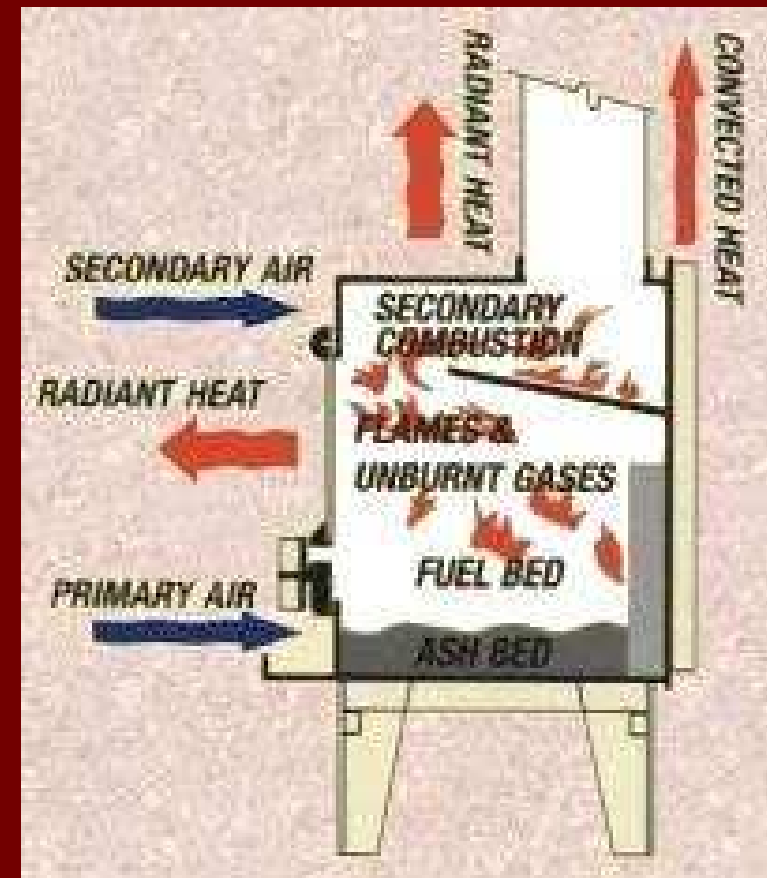
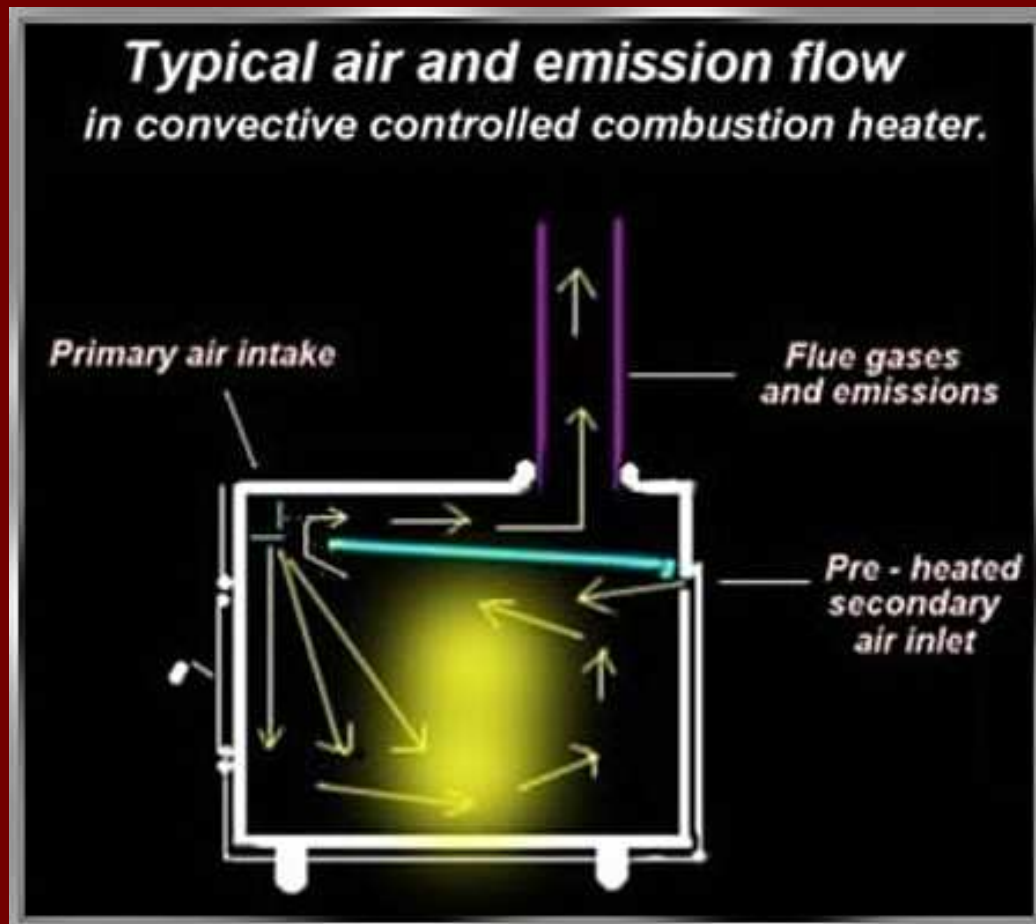
# Benefits of a Good Stove

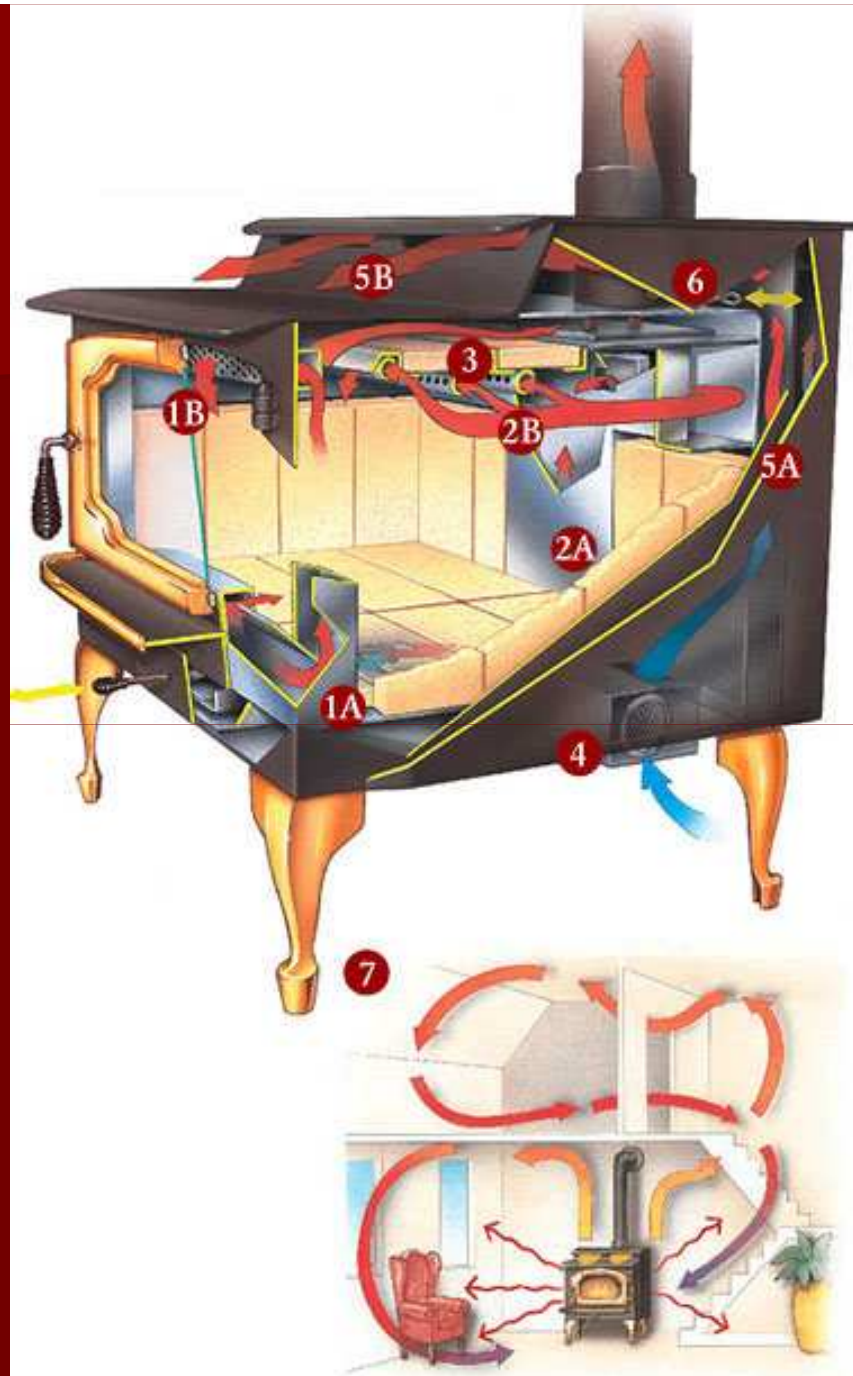
- 90% less smoke than older stoves.
- After a fire is ignited there should be no visible smoke from the chimney.
- Neighbors won't complain and the smell, thick smoke won't blanket your yard.
- Fires ignite easily and burn more completely in EPA-certified stoves.
- A glass door panel and an air-wash system allows monitoring the fire and adjusting it periodically to get a perfect burn.
- 90% less smoke means 90% less creosote. The chance of chimney fire is virtually eliminated, and the flue pipe and chimney less frequent cleaning.



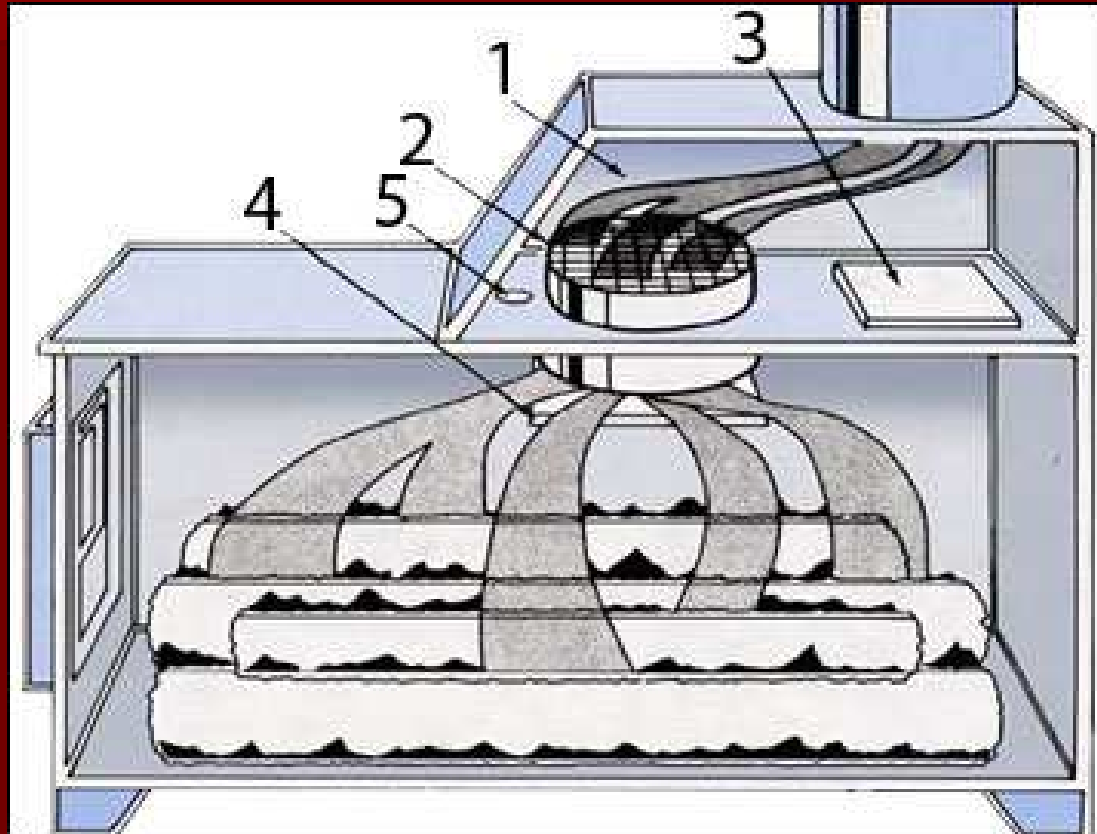
# New Stove Technology

- Secondary Combustion

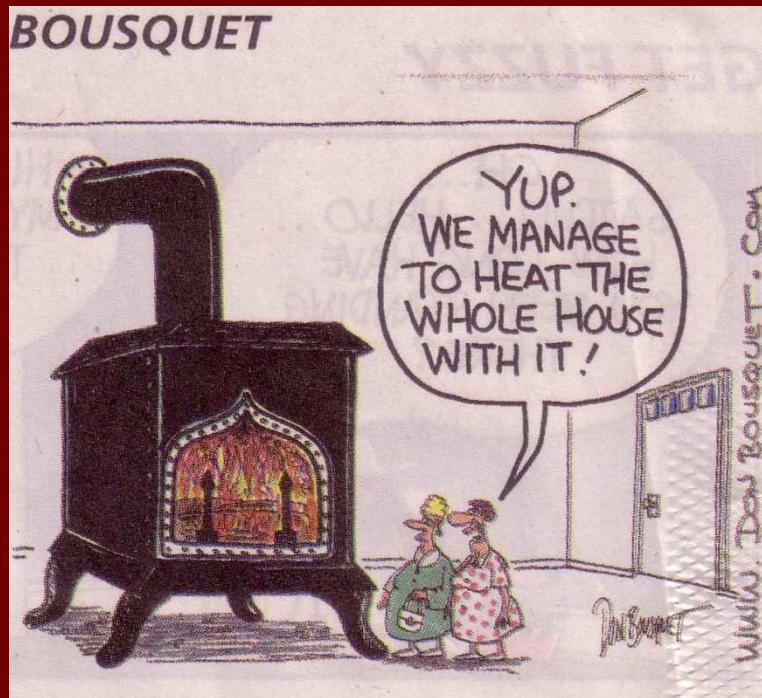




# Catalytic Stoves



# Planning an effective wood heat system



- Centrally locate space heaters
- Heat distribution options – greater comfort, less fuel
- Heating from a basement or not
- Clearances, shielding and double wall pipes

# Firewood

- Just as important as the new stove



# Cutting/Splitting/Storing

- **What size is suitable?**
- **Drying time?**
- **In the house or outside?**
- **How to have a properly stacked, well ventilated wood pile**
- **Covering wood piles & why**
- **Should seasoned wood be stored in house?**
- **Questions to ask when purchasing firewood**



# Why do we cut in the Fall?

- Firewood should be dried to less than 20% moisture content
- If you cut in the fall it will be wet



# Proper Storage

- Throwing a tarp over a pile in your driveway is not proper storage



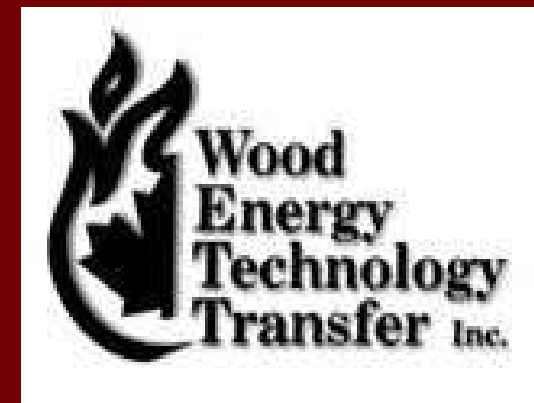
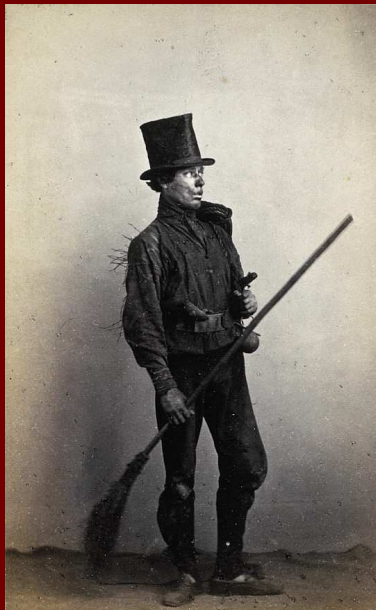
# Build a Woodshed

- For as little as \$300 - a simple shed



# System Maintenance

- Clean it yourself
- Hire a professional sweep
- Have it inspected by a WETT technician



# Insurance Issues

- **Insurance costs and wood appliances**
- **Keep your insurance company informed of changes**
  - **Building permit**
  - **WETT inspection**



# Burn Hot, Burn Clean

- **Questions and Answers**
- **Material for pick up**
- **Outdoor display**
- **Enter the draw!**



# Outside Demonstration

## Efficient vs Non-efficient







# Outside Demonstration

## Efficient vs Non-efficient



# Thank you!



THE  LUNG ASSOCIATION™  
British Columbia

  
**sea to sky clean air society**

  
BRITISH  
COLUMBIA  
The Best Place on Earth